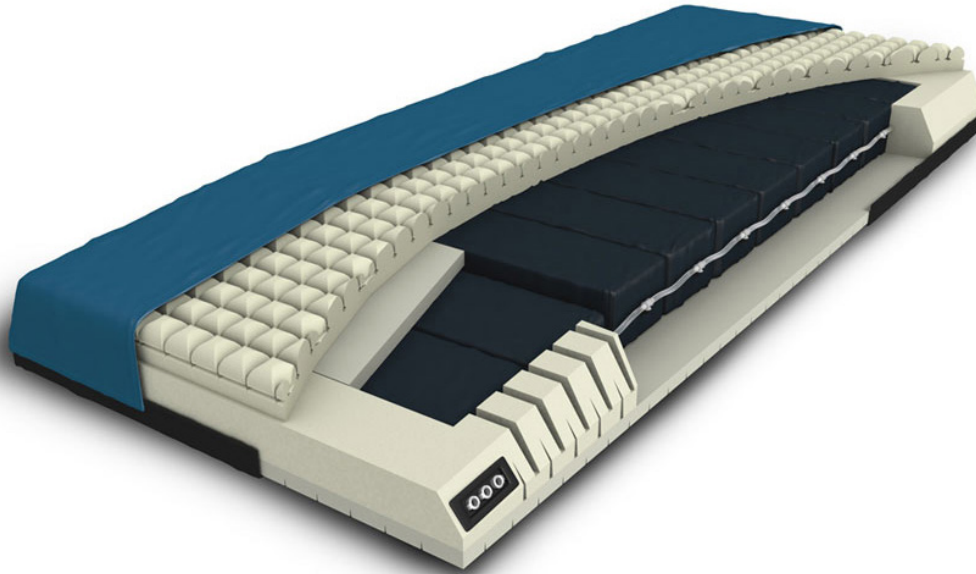


# Protevo GTE+ MCM



## CONVERTIBLE ALTERNATING PRESSURE WITH MICROCLIMATE MANAGEMENT

Protevo GTE+ Microclimate Management (Protevo GTE+ MCM) is an advanced pressure redistribution mattress that provides flexible therapy to help meet the wound care needs of your patient.

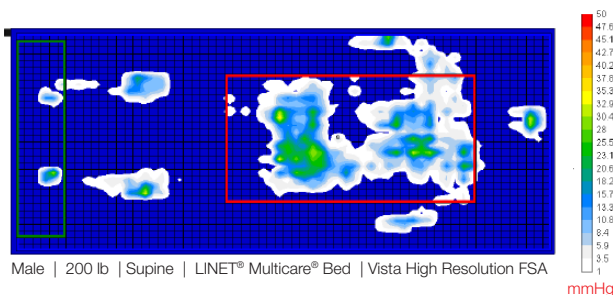
Used without a control unit, Protevo GTE+ MCM provides pressure redistribution through an open, self-adjusting air cylinder system.

Easily convert the surface with an optional control unit to provide microclimate management and alternating pressure.

Also available without microclimate management.



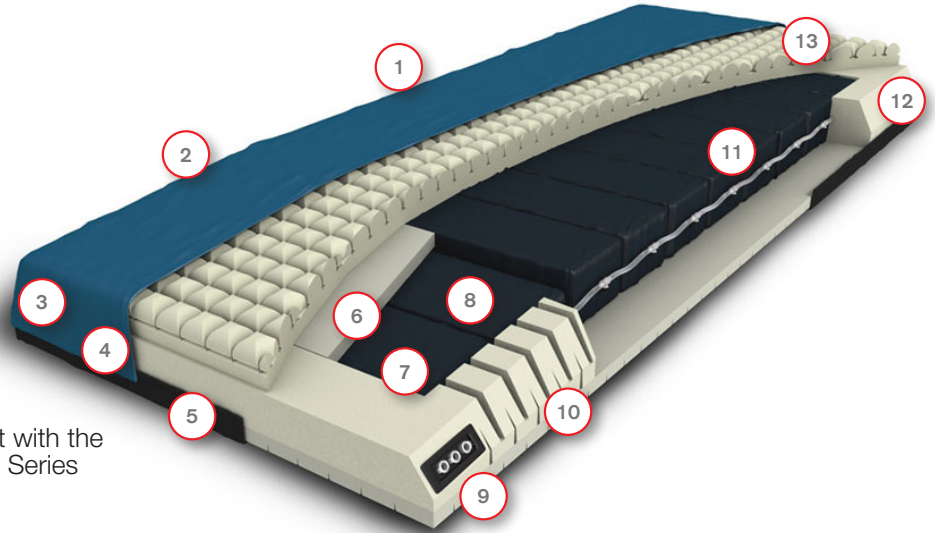
- Advanced pressure redistribution mattress that can be used with or without power.
- Indicated for prevention and treatment of pressure injuries through Stage IV.
- Open air system with self-adjusting air cells.
- 4-way stretch cover and 3-dimensional sculpted envelopment layer provide optimal patient comfort.
- 10 self-adjusting air cells provide optimal pressure redistribution with dedicated air cells for the heels.
- Optional control unit provides microclimate management and alternating pressure with quiet operation - no noisy, constant adjustments of an all-air mattress system.



|                                 |        |       |        |
|---------------------------------|--------|-------|--------|
| Sensing Area (in <sup>2</sup> ) | 505.46 | 11.23 | 365.05 |
| Coefficient of Variation (%)    | 83.70  | 76.08 | 80.63  |
| Average Pressure (mmHg)         | 8.79   | 11.51 | 9.24   |
| Maximum Pressure (mmHg)         | 36.48  | 32.17 | 36.48  |
| Regional Distribution (%)       | 100.00 | 2.91  | 75.89  |

# Protevo GTE+ MCM at a glance

- 1 4-way stretch cover with waterfall flap
- 2 Reinforced handles
- 3 360° zipper for no hassle cover-only replacement
- 4 Protective fire barrier
- 5 Non-slip bottom cover
- 6 Foam pillow for heel support
- 7 5° heel slope
- 8 2 air cells dedicated to heel zone
- 9 Connector ports (2 for AP, 1 for MCM)
- 10 Articulation cuts to expand and contract with the electric foot extension on the Multicare® Series bed frames\*
- 11 10 self-adjusting air cells provide alternating pressure
- 12 Side bolster support
- 13 3-dimensional sculpted viscoelastic comfort and envelopment layer



## TECHNICAL PARAMETERS\*\*

|            |              |                 |                               |
|------------|--------------|-----------------|-------------------------------|
| Width      | 35 - 35.5 in | Weight Capacity | 600 lb                        |
| Length     | 83 - 86 in   | Air Foam Cells  | 10                            |
| Height     | 7 - 8 in     | Flammability    | Meets Cal TB 129, 16 CFR 1633 |
| Heel Slope | 5°           |                 |                               |

\* Articulation cuts only available on the Multicare® series bed versions.

\*\*Width, length and height depends on bed frame model. Compatible LINET® bed frames include Eleganza series and Multicare series.

**LINET Americas, Inc.**

Phone: 877-815-9895 | E-mail: [info@linetamericas.com](mailto:info@linetamericas.com) | [www.linetamericas.com](http://www.linetamericas.com)

© 2021 LINET Americas, Inc. | 060121

LINET® and Multicare® are registered trademarks of LINET Group SE