

# OVERBED TABLES



## Just Released!

This over bed table is designed to handle the everyday use of the most demanding environment. Reliable performance and function was built into the design by incorporating a gas spring specifically for our over bed table - the table can be raised simply by lifting on the top. And lowering is a one-handed operation too.

Height range is as low as 30" and as high as 45". The 1 7/8" low profile of both bases means they will work with much easy access bed while the "U" shaped base was created for those beds with a fifth steer wheel. The table top is rated at 25 lbs.

We've addressed infection control with all seamless tops. And because over bed tables get banged around a lot we also offer two of them with a moulded urethane and laminate insert. There almost indestructible!

## Bases Styles:



Base Style 1



Base Style 2

## Top Styles:



Chose from 3 different top styles



Molded urethane caption here

# OVERBED TABLES

## Features:



Raising the top caption



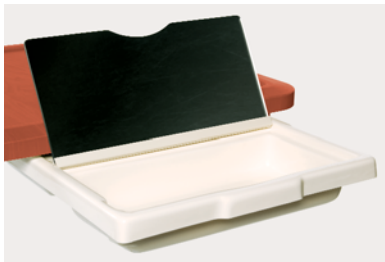
Lowering the top caption



Table at highest top caption



Table at lowest top caption



Optional vanity tray with mirror

Pricing...

## Wood finish selection:



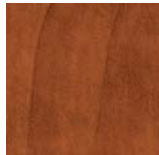
Hardrock Maple (HM)



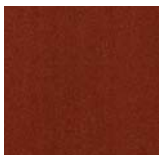
Sugar Maple (SM)



Candlelight (CL)



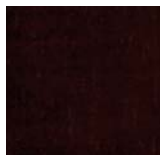
Summer Flame (SF)



Porto (PO)



Mahogany (MA)

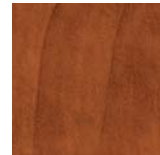


Chocolate (CH)

## Laminate insert finish selection:



Hardrock Maple (HM)



Summer Flame (SF)



Porto (PO)